

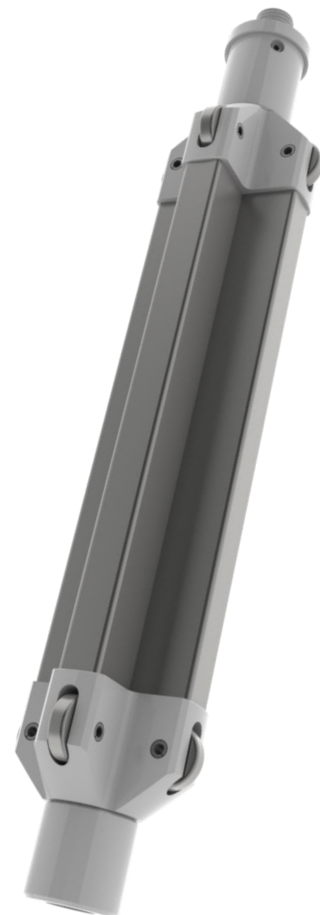


4,50” Modular X wing[®] Magnet

Model MX 101

For wireline, 4 wings for effective debris removal, with 1 1/16” SR pin x box connection

Dimensional data	
Max OD, inch	4,50
Min ID, inch	N/A
Fish neck OD, inch	2,30
Length, mm	600
Material properties	
Body material	AISI 4145
Tensile Yield,	61 000
Number of magnet ribs	4
Magnet type	Innovar specified
Operational data	
Lifting capacity, kg	NA
Connection	1 1/16” SR pin x box
Guide wheels	Yes
Transport Data	
Weight, not including transport box, kg	15
Box size, cm	30 x 30 x 75
Shielding for airplane	No
Shielding for helicopter	No



Updated electronic revision of this document is filed at <http://www.innovar.no>